



Artist Resource Pack

Working in Education

Kernow Education Arts Partnership, 21b Pydar Street, Truro TR1 2AY
Tel: 01872 275187 Fax: 01872 275182
www.keap.org.uk

A Company Limited by Guarantee. Registered in England and Wales No. 4253902
Registered Charity No. 1095166



Supported by
**ARTS COUNCIL
ENGLAND**

Contents

Getting Started	3
The Project	
Planning Sessions	4
The Project Plan	4
Evaluation	5
Copyright	6
Contracts and Getting Paid	7
The Legal Bit	
Enhanced Disclosure & ISA	8
Public Liability Insurance	9
Health & Safety and Risk Assessments	10
Child Protection	11
List of Public Liability Insurance Providers	12
Risk Assessment Forms	15
Child Protection Policy, Procedures & Code of Conduct	17
Child Protection Appendices	
Image Permission Form	26
Contact Details for Reporting Suspicions of Abuse	27
Responding to a Child Making a Disclosure	29
Checklist for Reporting Suspected Abuse	30
Flow Chart for Reporting Child Protection Concerns	31
Sample Contract	32

This pack has been produced by KEAP with thanks to DAISI, SPAEDA and GLOSS.

Getting Started

Working as an artist in education can be very rewarding, with many benefits. Exploring your art form with children will not only engage them in the creative process but also develop your confidence and abilities in this area. You never know- they might teach *you* something new!

If you haven't worked in schools before, you need to get some experience. This can be in the form of voluntary work, or shadowing more experienced lead artists in educational settings. There are also training courses available in various aspects of work including child protection, workshop leading and best practice. Talk to Creative Skills about the seminars and advice they can offer you. Creative Skills exists to support the development of individual skills for practitioners who work in the Creative Industries in Cornwall. Contact them at Krowji, West Park, Redruth, TR15 3AJ. Tel 01209 218879 or email admin@creativeskills.org.uk.

You will need to let the schools know what you have to offer. Put together a leaflet, with pictures if possible, that tells schools the arts forms, skills and experience you have including the projects you've already undertaken and the people you've worked with. Make sure you build up a portfolio of all the work you've done, including pictures and examples of work; yours and the workshop participants.

Teachers are under lots of pressure to meet their curriculum targets, so if the project you're offering links into the curriculum, then it will be more attractive to teachers. Have a look at the following websites for more information.

www.dfes.gov.uk

www.curriculumonline.gov.uk

www.qca.org.uk

www.accessart.org.uk

Also consider how you would like to work. Can you undertake a residency in the school, do you prefer to work with large groups of children, which age range do you best connect with.

The Project

Planning Sessions

You will need to plan the project thoroughly with the teacher and school to ensure that it completely meets all the aims and requirements. This is important whether you are providing a one off workshop, or a longer term residency.

You will also need to know:

- Location of school/college
- Facilities available for the project. Check that you all understand what is needed and what is available.
- Contact name
- Parking arrangements
- Assistant (a teacher if at all possible, who could also learn at the same time as the pupils)
- How the fee is to be paid and when ([See 'Getting Paid' p. 7](#))
- How many pupils, their age and ability.

The teacher will need to know:

- Artistic medium (sculpture, textiles etc.)
- Availability
- Materials provided and what you need to provide
- What facilities you need e.g. sink, CD player
- Fee and exactly what is included in the fee
- As much information as possible about the activity so the risk assessment is accurate. ([See 'Risk Assessment Forms' p. 15](#))

This information should be set out in a contract as below.

The Project Plan

Once you have had the planning session, it is useful for you and the teacher to write a project plan to be used with the contract. Use the information set out in the original brief, but also make sure the following is included:

1. Outline timetable
2. Who will be responsible for coordinating the project
3. Which members of the school staff will be involved?
4. Plan your evaluation at the start of the project
5. How the project will be evaluated ([see 'Evaluation' p. 5](#))
6. What resources are to be used and who is responsible for supplying them?

Evaluation

'Evaluation often becomes an after thought, grudgingly engaged to satisfy funding bodies'

Quote from 'Artists in schools' document from the One World One County project (Gloss- Gloucestershire Arts Education Partnership)

The above comment epitomises what evaluation often becomes. Evaluation should be an integral part of every project as it can:

- Help the project to develop as it goes along by increasing day-to-day awareness and discussion.
- Allow the participants to value what they're doing
- Provide effective ways of celebrating the whole project - which may vanish without a trace once it is over
- Provide valuable evidence to parents/governors/colleagues of the nature of the whole process and its benefits and assist in creating further opportunities
- Helps you to plan, improve and fundraise for other projects.

There are many different ways you can evaluate your project, and it needs to reflect the length of the project and the requirements you may have from a funding body. The most effective starting point is to outline the aims and objectives of the project before you begin the work. Any evaluation should reflect on whether these aims and objectives have been achieved. Write your methods of evaluation in the project proposal and make sure it is discussed at planning meetings with the school.

Be creative- you don't just have to use forms for evaluation. If the school has a video camera, why not get one of the students to film their friends taking part and their reactions to the project, or take sound bites and make into an audio backdrop for the work. If you start the evaluation process right at the beginning, you can incorporate the experiences into the final product.

Copyright

If you as an artist create original literary, dramatic, musical or artistic works – from sound recordings to information booklets and computer programmes you will automatically have copyright on them. However, issues of copyright, ownership and reproduction rights especially where work has been produced or contributed to by several people can be complex. All residency or workshop contracts that involve the creation of work must be clear about who owns the copyright and/or who can reproduce the work for different purposes.

Ownership of Copyright- The law as stated in the Copyright Designs and Patents Act 1988, says that all artists or others who create original work will own the copyright in that work and therefore will have exclusive right to reproduce it.

The artist still owns the copyright if the work has been commissioned by someone else.

If more than one person has created the work and the separate contributions cannot be distinguished – all the contributors own the copyright jointly.

Reproduction Rights- In general copyright owners will have the exclusive right to reproduce or copy the work and so to prevent others from doing so.

Ownership of work- All residency contracts must make clear who owns and work created and any preliminary drawings, maquettes or designs. This is separate from copyright ownership. The artist will continue to own the work unless it is stated otherwise in the contract.

The owner of the work does however have legal responsibilities for it; make it clear in the residency contract:

- Who is responsible for maintaining it and repairing it
- Who is responsible for insuring it against public liability

Children and Young People's Work- If you have created a piece of work in collaboration with children then remember that this is their intellectual property as well as yours. If the work has been produced solely by the children in a workshop directed by you, the work is their intellectual property, or possibly the schools'. This is especially relevant if pieces of their work are being published in magazines, made into displays, or postcards for example and their permission should be sought.

Contracts and Getting Paid

Contracts

A contract is a simple way of confirming all the details of the project in a written form: it can be a helpful planning device even if it is only a one-day project.

A contract should clearly set out the following information, and also include any relevant information from the planning meeting:

- The parties who the agreement is between
- Duration and dates of the project
- What activities are happening.
- Who and what numbers are taking part in the activity.
- Who is supplying materials/equipment e.g. The artist will bring: The school will supply:
- Funding for the project, or where it is coming from.
- Fees and expenses and when they will be paid. (See 'Getting Paid' p. 7)
- Insurance details (see 'Public Liability Insurance' p. 9)
- How the project will be evaluated/ documented. (some funders require the submission of an evaluation report as a condition of their grant)
- Copyrights (See 'Copyright' p. 6)
- Cancellation or curtailment of contract and unforeseen circumstances.
- Signatures of both parties.

[A template contract can be found on p. 32.](#)

Getting Paid

How the school pays you will depend on the nature of the project and the funding. For a one day or short term project, you should send an invoice when the work is complete. For a longer term project, you should arrange to be paid in instalments, and if you have to make a large outlay for materials before the project, you may be able to arrange an initial payment to cover this.

Be aware that it may take up to four weeks for your invoice to be paid.

Employed or Self- Employed?

When working with schools, you will need to prove to the Inland Revenue that you are self-employed and not an employee of the school. If you do not prove you are self-employed, you will be paid as an employee with emergency tax deducted. Talk to the school bursar or finance manager about this, and they should be able to provide you with the correct forms and advise on how they usually pay practitioners.

The Legal Bit

On the legal side of things, before you work in a school you need to have an Enhanced Disclosure, and Public Liability Insurance.

Enhanced Disclosure & ISA

All practitioners working in schools, or with children, young people or vulnerable adults, should have an Enhanced Disclosure Certificate. Disclosure is an information service run by the Criminal Records Bureau which helps organisations make informed recruitment decisions.

The law has not defined how long a Disclosure check is 'current'. Someone could be checked through the Disclosure service and soon after commit an offence and be convicted. Therefore, different organisations and schools will have different policies with regard to Disclosure and you will need to comply with these.

KEAP can process your Disclosure with a cost of £50.00. For more information, please contact Helen Reynolds or Jemima Taylor on 01872 275187 or email hreynolds@cornwall.gov.uk

ISA - The Independent Safeguarding Authority (ISA) has been created to help prevent unsuitable people from working with children and vulnerable adults. They work together with the Criminal Records Bureau.

The law now states that anyone undertaking work with young people or vulnerable adults needs to be ISA registered if their work is considered to be 'Regulated' or 'Controlled'. It is clear that the work of artists in education falls under the below definition of 'Regulated activity'.

Regulated activity

Any activity of a specified nature that involves contact with children or vulnerable adults frequently, intensively and/or overnight (such activities include teaching, training, care, supervision, advice, treatment and transportation).

HOWEVER – Although artist in education work with young people falls into the category of 'Regulated' activity, most projects are not 'Frequent' or 'Intensive' (defined below). Only certain projects, such as regular after school art clubs or an arts week which involved an artist at the same school for 4 days, would require ISA registration. An artist going into school for a one off workshop will not require ISA registration.

The ISA definition of 'Frequent' and 'Intensive' is as follows:

Frequent - Once a week or more with the same group of children

Intensive - Takes place on four or more days in a 30-day period

Please remember that it is a legal requirement for you to be ISA registered if your work falls into one of these categories. You do not have to be involved with '*Frequent*' or '*Intensive*' projects in order to become ISA registered, so you may want to register with the ISA scheme as part of your next CRB check in anticipation of carrying out this sort of work in the future.

When do I need to register?

Although the Vetting and Barring Scheme was officially launched in October 2009, you will not be able to register with ISA until **26 JULY 2010**. From **1 November 2010** anyone considered a *new employee* undertaking '*Frequent*' or '*Intensive*' work with children and young people will need to be ISA registered.

As a freelance artist in education you are likely to find that schools and organisations consider you a 'new employee' for each separate piece of work you do with them, as you are not on their payroll.

From 1 April 2011, any people who were already working in regulated activity on 26 July 2010 and have not moved into a new role with a new organisation may apply for ISA registration. This will happen in phases coordinated by the organisation you work for.

By 31 July 2015 everyone working in regulated activity must be ISA registered.

KEAP's full guidance document can be found on the KEAP website www.keap.org.uk/artist_resource_pack.html and a useful guidance document from the ISA can be downloaded from <http://www.isa.gov.org.uk/Default.aspx?page=402>

Public Liability Insurance

Any artist who works freelance in education must have their own Public Liability Insurance to cover them for at least £2 million. This insurance covers you for an accident for which you could be held personally liable. It does not cover you or your equipment. The school's insurance will not cover you as you are not employed by them.

Phone around for different quotes and try to find a policy to suit your needs. Often you can get cover that covers your equipment, studio/workspace and gives you PLI. If you are part of a studio group or organisation it may be cheaper to get cover as a group.

[There is a list of companies who offer different types of PLI on p.12.](#)

Health and Safety & Risk Assessments

When working in a school the overall responsibility for general Health and Safety lies with the Head Teacher and School Governors. However as an artist or group of artists working in schools you too have a responsibility for the health and safety of the group of children you are working with and for yourself. You need to take out your own public liability insurance and in addition you should check with the school about insurance cover for the project you are working on in school. These guidelines have been written to help ensure that when you deliver your workshop or performance you have taken all the necessary precautions to comply with Health and Safety Legislation.

Health & Safety Policy- When you begin planning your workshop/performance ask for a copy of the School's Health and Safety policy and note the aspects of the policy that will apply to your workshop/performance.

Risk Assessment- This is a careful examination of what could cause harm to people so that a judgement can be made as to whether enough precautions have been taken or whether more should be done to prevent harm. The key judgement is whether a hazard is significant and whether the precautions taken make the risks smaller. The Risk Assessment may be carried out by the teacher or by yourself. We have set out an example of a risk assessment for you to use if you don't already have a model to follow, there are [sample forms on page 15](#). The five steps involved are:

1. Look for hazards
2. Decide who might be harmed and how
3. Evaluate the risk and decide whether more precautions are necessary
4. Make a record of your findings
5. Review and revise the assessment if necessary

Workshop Rules- At the beginning of your workshop or performance you may wish to agree some "Golden Rules" with the children which apply to their time in your workshop. These could include safety rules, following recommendations about dress and or dangerous jewellery, only touching equipment at the appropriate time, ways of addressing each other and use of language, respect for differing views etc.

Practicalities- It is highly likely that during your workshop or performance you will wish to have access to areas normally closed to pupils or access after school hours. We strongly recommend that you inform those responsible for the building and school site about your needs so that arrangements can be made in advance. This might include storage of work in progress or of materials, it may relate to out of hours access and security measures or to waste materials and rubbish.

Emergency Procedures- The school should have clear guidelines on what to do in the case of an emergency and you should ensure that you are aware of these before you begin working in school. Ask to be shown where first aid boxes are located around the school. It is also important to establish whether any of the children in your workshop have special needs or medical conditions so that you are aware of any possible incidents during your work with them.

COSHH- The control of substances hazardous to health. Make sure you use substances and products which are in their original containers and have their original label clearly visible. Don't decant substances or products for use in workshops with children and young people. Follow the instructions on the product label for safe use and take the stated steps in the case of an accident.

Child Protection

Child protection is a very important and complicated issue. KEAP has adopted a Child Protection policy and requires all artists to read, and follow the policy.

One issue which occurs very often is being left alone with children in a workshop or classroom setting. You should make it very clear that you are not in the classroom in place of the teacher and should not be left alone. Situations such as working with small groups of children away from the main class can often result in working on your own. In these cases it should be possible to have a Teaching Assistant to work with you. Apart from the issue of child protection, it is very valuable to the teacher to work alongside you to give them a chance to enjoy, observe, participate and get new ideas to use in the classroom themselves.

After school clubs and holiday activities are examples where you are very likely to be delivering an activity on your own, as this is part of a school's Extended Services provision rather than something the teacher's are responsible for. In this situation you should be very clear about where your responsibilities lie and where you can get support if needed.

A copy of the Child Protection Policy which includes a Code of Conduct is found on p. 17. Please ensure you are aware of the issues, and contact KEAP if you have any queries.

Public Liability Insurance Providers

a-n The Artists Information Company

PLI of £5 million included in membership. Package 'Artist & AIR subscription' for practicing visual or applied artists.

From £28 for online only membership (11.02.10)

Go to www.a-n.co.uk and click on AIR membership at bottom of page

SAA- Society for All Artists

Insurance available with certain types of membership.

PO BOX 50
Newark
Notts.
NG23 5GY
Tel: 01949 844050
www.saa.co.uk

Equity *Suitable for performance artists*

Members only, PLI is built into membership and rates are linked to your professional earnings.

Wales and South West Office
Transport House
1 Cathedral Road
Cardiff
CF1 9SD

tel: 029 2039 7971
fax: 029 2023 0754
www.equity.org.uk

Musicians Union *suitable for musicians*

Members only- PLI of up to £10 million is built into membership. Membership starts from £99.00

60-62 Clapham Road
London
SW9 0JJ

Tel: 020 75825566
www.musiciansunion.org.uk

BECTU *insures freelance artists and practitioners in the entertainment industries*

Members only, PLI is £12 on top of the membership fee for £3 million cover. The PLI provider is AON Ltd, Capital House, Houndwell Place, Southampton, S01 1HW on 0845 6010380.

373-377 Clapham Road
London
SW9 9BT

Tel: 020 7346 0900
www.bectu.org.uk

Dixon Chalmers Ltd *offers policies for circus performers including workshops. May also offer cover for other performance artists.*

Huntvita House
32 Haygate Road
Wellington
Telford
TF1 1QT
Tel: 01952 641321

Country Mutual Insurance Brokers *Performing arts package and may also insure workshops run by visual artists*

Cover runs from September to September. Rates at 16/11/07 are £80 for £2 million, £140 for £2 million if using fire/light or £165 for £5 million

32 Haygate Road
Wellington
Telford
Shropshire
TF1 1QT
Tel: 01743 282760

Ian W. Wallace *Special insurance package for crafts people.*

PO Box 5063
Verwood
Dorset
BH31 6WB
Tel: 0800 919359
www.craftinsurnace.co.uk

GSB Insurance *Insures artists*

1 Tomlins Corner
Queens Street
Gillingham
Dorset

SP8 4PJ
Tel: 01747 821188

Phillipa Levy *Insures Flameworks in Plymouth*

Phillipa Levy & Assoc.
19 Louisa Street
London
E1 4NF
Tel: 0207 790 1963

Geoffreys Group
Stephen Ward 01228 552946 textile and craft insurance.
Issued by Norwich Union

Eden House,
1 Wavell Drive
Rose hill
Carlisle
Cumbria
CA1 2FT

National Association of Field Study Officers

Can cover outdoor work with young people
You will need to join NAFSO- £35
They can then help to arrange insurance with Zurich approx £120
www.nafso.org.uk

SBJ UK

SBJ UK Ltd
3rd Floor
28 Lockyer St
Plymouth
PL1 2QW

01752 202030

See their website at www.sbj.co.uk

Risk Assessment

Site Location:		Date of last assessment:		Date of new assessment:	
----------------	--	--------------------------	--	-------------------------	--

Activity / situation:					
Leader:		Qualification:			

How to use this form

1. Identify potential hazards e.g. walking on roads, sunburn, getting lost, travelling on a ferry.
2. Identify those at risk e.g. young persons, leaders, other adults.
3. Identify severity of potential outcome and its likelihood and give a numerical value using the Likelihood and Severity Chart.
4. Identify the action required to reduce the risk or do not proceed with the activity.

Likelihood and Severity Chart					
Likelihood					
Certain = 5	5	10	15	20	25
Very Likely = 4	4	8	12	16	20
Likely = 3	3	6	9	12	15
Unlikely = 2	2	4	6	8	10
Very unlikely = 1	1	2	3	4	5
Severity	Delay/reportable incident =1	Minor injury =2	Injury/non disabling = 3	Major injury = 4	Death = 5

Persons at Risk	
L	Leader
OA	Other Adults
Y	Young People
I	Instructor
PV	Public Visitor

Risk Rating	
1-5	Low
6-12	Medium
12+	High

KEAP – Child Protection Policy & Procedures

Policy Statement

KEAP has a duty of care to safeguard all children involved in KEAP activities from harm. All children have a right to protection and the needs of disabled children and others who may be particularly vulnerable are taken into account. KEAP will ensure the safety and protection of all children involved in KEAP activities through adherence to the Child Protection guidelines adopted by KEAP. KEAP is fully committed to this aim, which over-rides all other concerns.

We believe that:

- The welfare of the child or young person is paramount.
- All children and young people, whatever their age, culture, disability, gender, language, racial origin, religious beliefs and/or sexual identity have the right to protection from abuse.
- All suspicions and allegations of abuse should be taken seriously and responded to swiftly and appropriately.
- Staff and volunteers should be clear on how to respond appropriately.

Policy Aims

The aim of KEAP's Child Protection Policy is to promote good practice and to allow all staff and volunteers to make informed and confident responses to specific child protection issues

Where the policy refers to 'staff' this includes anyone employed by KEAP through the payroll or on a freelance basis or working with KEAP as a volunteer.

Review of Policy

This policy will be reviewed annually and amended when necessary.

Promote Good Practice

Abuse (emotional, neglect, physical or sexual) can occur within many situations including the home, the school and the arts environment. Some individuals will actively seek employment or voluntary work with young people in order to harm them. An artist or KEAP volunteer may have regular contact with young people and should seek to adhere to the highest standards of child protection at all times. They should be an important link in identifying cases where they need protection. All suspicious cases of poor practice should be reported following the guidelines in this document, usually to the KEAP Director.

Code of Conduct

Definition of terms: For the purposes of this Code of Conduct, the term 'staff' or 'member of staff' will include all artists, volunteers, trustees and paid employees who work on behalf of KEAP.

The term 'child', where used on its own, will include all children and young people under the age of 18.

All staff will be encouraged to demonstrate exemplary behaviour in order to protect themselves from false allegations. The following Code of Conduct illustrates how to create a positive culture and climate. It is based on the Independent Theatre Council's report, 'Working in Schools: A Practical Guide to Partnership' and Sport England's model Child Protection policy.

Your vehicle:

- Drive slowly on the school premises. Take particular care when reversing.
- If you do not know where the school entrance is, it is better to stop and go into the school on foot rather than drive around the school grounds.
- It is a good idea to switch off any music when arriving on school premises
- Never obstruct fire exits when parking, even if only temporarily, to find out where to go or unload.
- Check with Reception where you can park. You may be allowed nearer to the school to unload.
- Keep the vehicle locked at all times.
- Never give a pupil a lift in your vehicle.

Reception:

- Go to Reception to get signed in. You will be given a Visitor badge to wear.
- Make sure you know and follow school procedures and times.
- Ask where the staff toilets are, never use the children's toilets.
- Avoid wandering around the school.

Conduct around the school:

- You are an ambassador for the arts and a role model for the children. Everything you do should reflect this.
- Do not smoke anywhere on the school premises including in your vehicle.
- Alcohol and recreational drugs should never be taken onto school premises under any circumstances.
- No-one should consume alcohol before arriving at a school.
- Prescribed drugs should be kept hidden and out of reach of the children e.g. in the locked vehicle.
- Move around the school quietly. Avoid shouting, loud laughter, slamming doors, or any unnecessary noise.
- Make sure language and conversation is appropriate.
- Ensure your actions do not conflict with school rules. Some schools do not allow sweets or chewing gum.
- Take responsibility for clearing up after a workshop or performance. Take any rubbish with you.
- Report any accidents or breakages immediately.
- Wear your named visitor badge (except if in costume).

Conduct with Children:

- All artists should have an Enhanced Disclosure certificate which is less than 3 years old.
- Schools have different Child Protection codes of conduct, for instance no use of first names. Check with the school about their policies.
- Treat all children and young people with respect. Don't automatically laugh at something a child says to you; they may not have intended it to be funny.

- Never reprimand or shout at a child.
- Give enthusiastic and constructive feedback rather than negative criticism.
- Avoid being left alone with a single child.
- Do not initiate any physical contact with children. It should not be necessary. If the nature of the workshop requires any physical contact this should be discussed with the teachers in advance.
- If a child initiates physical contact such as approaching you for a hug, deflect them if possible and stay side on to the child.
- Do not encourage children to sit on your knee. Sit beside them.
- You are not in the school in a disciplinary capacity. Leave that to the teachers.
- Avoid getting involved in issues that arise amongst the children. For instance, don't try to break up a fight.
- If a child informs you of a problem, tell a teacher. Don't hang around while the teacher deals with the situation.
- If a child has an accident the staff are responsible for administering first aid.
- If you are exploring sensitive issues, such as bullying or drugs, children could approach you with their problems. Without being dismissive, try to avoid becoming involved. Do not agree to keep the issue secret, and encourage them to tell a teacher or parent.
- If something a child tells you leads you to suspect that they are being abused you are obliged to report it to the designated child protection teacher at the school. Also report it to KEAP's designated child protection officer, the Director.
- Maintain professional behaviour at all times.

Practices never to be allowed

The following should never be allowed. You should never:

- Engage in rough, physical or sexually provocative activities, including horseplay
- Never work or perform without the presence of a teacher/s.
- Share a bedroom with a child. If alone with a child in a room, for any reason, the door should be left open.
- Allow or engage in any form of inappropriate touching.
- Allow children to use inappropriate language unchallenged.
- Make sexually suggestive comments to a child, even in fun.
- Reduce a child to tears as a form of control.
- Allow allegations made by a child to go unchallenged, unrecorded or not acted upon.
- Do things of a personal nature for children that they can do for themselves.
- Never take responsibility for a child under any circumstances.

Health and Safety

- Staff and volunteers are expected to promote Health and Safety considerations to children and young people.
- All volunteers and staff must agree to work in accordance with KEAP's policy on Health and Safety and to work without causing danger to themselves, to other volunteers or to the general public.
- Risk assessment should be a part of planning any project and should take into account all aspects of the project, but particularly any risks relating to protection of children and young people. Risk management should be an ongoing part of every project.

Communicating with Children & Young People by Email, Phone and Text

It is recognised that from time to time KEAP may deliver work directly with young people rather than through a school or youth group and that most areas of work allow us to communicate through a virtual medium such as online, or via texting, so it is important to consider young people's safety when they use this form of media.

Where these situations are expected to arise, the Director should be informed and the following code of conduct should be followed.

Contacting a young person:

All under 18's must have parental/guardian permission for KEAP to contact the young person via email or mobile phone.

Via email

When emailing young people about a KEAP piece of work, all email addresses of young people must be "blind carbon copied" (bcc) so their email address can be concealed. You must always copy in a member of staff so no emails are just between just you and a young person.

Via mobile phone

Contacting a young person on their mobile should be done within office hours and when another member of staff is present. If contact takes place outside these hours or when there are no other staff members present ensure that it is recorded and emailed to the Director on amanda.harris@keap.org.uk .

If a young person initiates inappropriate contact via email, text, or phone, KEAP staff must inform the young person that it is inappropriate and then inform the Director.

Recruitment and Training of Staff and Volunteers

KEAP recognises that anyone may have the potential to abuse children in some way. All reasonable steps are taken to ensure suitable people are recruited.

Interview and induction:

- Consent should be obtained from an applicant to seek an Enhanced Disclosure.
- Two confidential references will be required, of which one should be regarding previous work with children (for posts in which there will be direct contact with children).
- Evidence of identity (passport or driving licence with photo) will be required.
- All staff and volunteers will be required to undergo an interview carried out to acceptable protocol and recommendations.

All staff and volunteers should receive formal or informal induction, during which:

- A check will be made that qualifications can be substantiated.
- The job requirements and responsibilities will be clarified.
- They should receive a copy of and sign up to KEAP's Code of Conduct.
- Child protection procedures are explained and training needs are identified.

Criminal Record Bureau (CRB) Enhanced Disclosure & The Vetting & Barring Scheme:

The CRB's aim is to help organisations in the public, private and voluntary sectors by identifying candidates who may be unsuitable to work with young people or other vulnerable members of society.

KEAP insists that any member of staff over the age of 18 working with young people must have a CRB check which is within 3 years old. KEAP reserves the right to ask for a new disclosure if the current one is not deemed suitable.

For more information, please see Criminal Record Bureau website www.crb.gov.uk

ISA - The Independent Safeguarding Authority (ISA) has been created to help prevent unsuitable people from working with children and vulnerable adults. They work together with the Criminal Records Bureau.

Under this scheme, anyone undertaking 'regulated' or 'controlled' activity with children or young people must be registered on the Vetting & Barring Scheme website.

KEAP will require that where appropriate any prospective employee or current employee is registered on the Vetting & Barring Scheme to comply with the timeline as the scheme comes into force.

Training:

Staff and volunteers will receive training to:

- Analyse their own practice against established good practice and to ensure their practice is likely to protect them against false allegations.
- Recognise their responsibilities and report any concerns about suspected poor practice or possible abuse.
- Respond to concerns expressed by a child or young person.
- Work safely and effectively with children or young people.

KEAP requires staff and volunteers to attend at least one good practice and child protection awareness training workshop, to ensure their practice is exemplary and to facilitate the development of a positive culture towards good practice and child protection.

Supervision:

- Staff and volunteers will have access to a complaints procedure.
- Staff will have an annual review meeting.

Use of photographs and video

- Schools will be asked to give their permission for photographs to be taken.
- Schools must give prior written permission for the use of any photographs or video (*see attached permission form – Model 1*).
- Children's names will not accompany photographs unless they are, for example, prizewinners or members of a troupe where we have the permission of either their parent or school.

Responding to allegations or suspicions

It is not the responsibility of anyone working for KEAP, in a paid or unpaid capacity, to decide whether or not child abuse has taken place. However, there is a responsibility to act on any concerns using the process outlined in *Model 5 Flowchart: Reporting child protection concerns*.

KEAP assure all staff that it will fully support and protect anyone who in good faith reports their concern that a colleague is, or may be, abusing a child.

If a member of staff or volunteer was worried about sharing concerns about abuse with a senior colleague, they can contact the Safeguarding Children Unit, Social Services, the police or phone the NSPCC Helpline. These contact details can be found on p10.

Where there is a complaint against a member of staff there may be three types of investigation:

- A criminal investigation.
- A child protection investigation.
- A disciplinary or misconduct investigation.

Complaints against a member of staff will always and without exception be investigated. The police and other agencies will be informed at the discretion of the school/KEAP and the designated officer will be informed in all cases. The results of the police and child protection investigation may influence the disciplinary investigation, but not necessarily.

KEAP's Designated Officer with responsibility for Child Protection:

The designated officer will, in all cases, be the Director of KEAP. When an artist is working in a school and has a concern or is disclosed to, they should report to the school's designated child protection officer in full and make an account to the KEAP Director. See *attached Model 2 – Reporting allegations or suspicions of abuse – contact details*.

Accidents and injuries:

If a child or young person is injured – while at a KEAP event or participating in a KEAP project in a school – the KEAP member of staff or volunteer must make a record of the injury in KEAP's or the school's accident book. This record should be counter-signed by a teacher if in a school.

If a child or young person arrives for a KEAP arts activity with an obvious physical injury, a record must be made in the school's accident book. This record should be counter-signed by the person with responsibility for the individual. This record can be useful if a formal allegation is made later. It will also be a record that the individual did not sustain the injury whilst working with KEAP.

If someone discloses to KEAP staff:

It is possible that a child or young person who is suffering, or has suffered, abuse will disclose to a KEAP member of staff. This is something that everyone should be prepared for and must handle carefully. Follow the procedure outlined in *Model 3- Advice on how to respond to a child making an allegation of abuse* and *Model 4 - a*

checklist for reporting suspected abuse. Both documents are based on models provided in NSPCC's 'firstcheck'.

In confidence, make the KEAP Director aware of the situation.

Rights and confidentiality:

If a complaint or allegation is made against a member of KEAP's staff, they should be made aware of their rights under both employment law and internal disciplinary procedures. This is the responsibility of the KEAP Director. Both the alleged abuser and the person who is thought to have been abused have the right to confidentiality under the Data Protection Act 1998. In criminal law the Crown or other prosecuting authority has to prove guilt and the defendant is presumed innocent until proven guilty. See *attached NSPCC flowchart for reporting of concerns (Model 5)*.

Internal enquiries and suspension:

In the event of an accusation of abuse being made against any member of KEAP's staff, the individual accused will be automatically suspended pending further investigations. The temporary suspension of a member of staff in no way implies guilt or innocence. It is a measure intended to protect and reassure both staff and children.

KEAP's Disciplinary Committee (composed of the Director, Chair of Trustees and one other Trustee) will assess all cases based upon available information.

The member of staff against whom an accusation of abuse has been made will be summoned to an interview with the Disciplinary Committee as early as possible. They are entitled to be accompanied to this interview. Minutes will be taken of the interview. The task of the Disciplinary Committee is to decide whether or not the accused member of staff should be allowed to continue to work with children. At all times the welfare of children should be of paramount importance.

In all cases where the accusation of abuse is found to be true, the Disciplinary Committee will normally terminate the employment, contract or agreement with the individual. A Trustee found to have abused a child will be asked to stand down from KEAP. Lesser measures may be taken at the discretion of the Disciplinary Committee.

Action if bullying is suspected

The same procedure should be followed as set out above in 'Responding to allegations or suspicions'.

Whistle Blowing Policy

Staff must acknowledge their individual responsibility to bring matters of concern to the attention of senior management and/or relevant agencies. Although this can be difficult this is particularly important where the welfare of children may be at risk.

You may be the first to recognise that something is wrong but may not feel able to express your concerns out of a feeling that this would be disloyal to colleagues or you may fear harassment or victimisation. These feelings, however natural, must never result in a child or young person continuing to be unnecessarily at risk. Remember it is often the most vulnerable children or young person who are targeted. These children need someone like you to safeguard their welfare.

Don't think what if I'm wrong - think what if I'm right

Reasons for whistle blowing

- Each individual has a responsibility for raising concerns about unacceptable practice or behaviour
- To prevent the problem worsening or widening
- To protect or reduce risks to others
- To prevent becoming implicated yourself

What stops people from whistle blowing

- Starting a chain of events which spirals
- Disrupting the work or project
- Fear of getting it wrong
- Fear of repercussions or damaging careers
- Fear of not being believe

How to raise a concern

- You should voice your concerns, suspicions or uneasiness as soon as you feel you can. The earlier a concern is expressed the easier and sooner action can be taken
- Try to pinpoint exactly what practice is concerning you and why
- Approach the KEAP Child Protection Officer or School Child Protection Officer.
- If your concern is about your immediate manager/Headteacher, or you feel you need to take it to someone outside the school/organisation, contact the Safeguarding Children Unit.
- Make sure you get a satisfactory response - don't let matters rest.
- Ideally, you should put your concerns in writing, outlining the background and history, giving names, dates and places where you can.
- A member of staff is not expected to prove the truth of an allegation but will need to demonstrate sufficient grounds for the concern.

What happens next

- You should be given information on the nature and progress of any enquiries.
- Your employer has a responsibility to protect you from harassment or victimisation.
- No action will be taken against you if the concern proves to be unfounded and was raised in good faith.
- Malicious allegations may be considered as a disciplinary offence.

Self reporting

There may be occasions where a member of staff has a personal difficulty, perhaps a physical or mental health problem, which they know to be impinging on their professional competence. Staff have a responsibility to discuss such a situation with their line manager so professional and personal support can be offered to the member of staff concerned. Whilst such reporting will remain confidential in most instances, this cannot be guaranteed where personal difficulties raise concerns about the welfare or safety of children.

Further advice and support

It is recognised that whistle blowing can be difficult and stressful. Advice and support is available from the KEAP Director and board of trustees.

Model 1 – Image Permission Form

School _____

Project _____

KEAP would like to take photographs of your pupils participating in KEAP Projects for advocacy purposes. These images may appear in our printed publications, on DVD, on our website or on a promotional CD.

KEAP's Policy for using Photographs and Video

- ✓ Schools must give written permission for the use of any photographs or video.
- ✓ Children's names will not accompany photographs unless they are prizewinners or members of a troupe and we have their permission.
- ✓ Photographs will be kept for 5 years and then destroyed and not used again.



Please circle your answer

- | | |
|--|-----------------|
| 1. May we use your images from this project in our printed advocacy publications? (such as Newsletters, & the KEAP File) | Yes / No |
| 2. May we use images from this project on our website? | Yes / No |
| 3. May we use images from this project in DVDs? | Yes / No |
| 4. May we record images from this project on promotional CDs? | Yes / No |

I consent to KEAP to take and use any photograph/film produced from the above project.

1. I confirm that I have obtained the permission of the adult/parent/carer/person with custody of any children or young person who appears in the photograph/film.
2. I am aware that the school and those at the school appearing in the photograph/film have no rights of ownership, copyright or other interest in the photograph/film produced from this assignment.
3. I understand and agree to KEAP using any photographs/film produced from the purposes agreed, as indicated above.

Signature of the Headteacher

Print name

Date

Please return the completed form to: The Administrator, KEAP, 21b Pydar Street, Truro, Cornwall TR1 2AY Tel. 01872 275187

Model 2 - Reporting allegations or suspicions of abuse

Important Contact Details

First Point of Contact is KEAP Designated Child Protection Officer:

Name: Amanda Harris
Job: Director of KEAP
Address: 21b Pydar Street, Truro, Cornwall TR1 2AY.
Telephone: 01872 275187
Mobile: 07968 892661

It is not the responsibility of KEAP's staff, freelance or otherwise, to contact the Safeguarding Children Unit or Social Services. This responsibility lies with the school's designated child protection officer and the KEAP Director.

Appropriate contacts outside KEAP to be contacted by KEAP Director if required:

1. Safeguarding Children Unit
Pendragon House
Gloweth
Truro TR1 3LS
01872 253549/254552

This unit will help you decide whether to refer a young person to social services- if the disclosure is a bit woolly/ unclear/ not sure etc.

2. If you do refer to social services, contact the Central Unit in the first instance

Central Unit for Acute and Complex Services- handles referrals to the Social Care Team 0300 123 1116	
Social Services Local Offices Penzance Office: Roscadghill Parc Heamoor Penzance TR18 3QX 01736 365714	Camborne Office: The White House 24 Basset Road Camborne TR14 8SL 01209 714721
Liskeard Office: Westbourne House West Street Liskeard PL14 6BY 01579 342919	Bodmin Office: Priory House Priority Road Bodmin PL31 2AD 01208 74491/78020
St Austell Office: 6 Carlyon Road St Austell PL25 4NG 01726 63582	Truro Office: Cathedral Close Truro TR1 2TE 01872 278533
Launceston Office: Hendra House Dunheved Road	Out of Hours Service 01208 25130 (St Lawrence's Hospital)

Launceston PL15 7JG 01566 773750	
DEVON AND CORNWALL CONSTABULARY	
Family Protection Unit Area 1 - Kerrier/Penwith Chy Cosel 33 Church Road Pool, Redruth TR15 3PT 01209 613083 01209 613082 answerphone	Family Protection Unit Area 1 - Carrick/Restormal 1 Palace Road St Austell PL25 4AL 01726 222484
Family Protection Unit Area 1 - North Cornwall/Caradon 2/4 Moorland Road Launceston PL15 7HY 01566 771329 (main Office) 01566 771326 (Det Sergeant)	

NSPCC Child Protection Helpline 0808 800 5000

Model 3 – Responding to a child making an allegation of abuse

- ❖ Stay calm
- ❖ Listen carefully to what is said
- ❖ Find an appropriate early opportunity to explain that it is likely that the information will need to be shared with others – do not promise to keep secrets
- ❖ Allow the child to continue at his/her own pace
- ❖ Ask questions for clarification only and at all times avoid asking questions that suggest a particular answer
- ❖ Reassure the child that they have done the right thing in telling you
- ❖ Tell them what you will do next and with whom the information will be shared
- ❖ Record in writing what was said using the child's own words as soon as possible – note date, time, any names mentioned, to whom the information was given and ensure that the record is signed and dated.
- ❖ Refer the case to the school's designated child protection officer and the KEAP Director as soon as possible.
- ❖ Ensure the written account is given to the school's designated child protection officer and the KEAP Director within 24 hours.

REMEMBER:

It is important that everyone in KEAP is aware that the person who first encounters a case of alleged or suspected abuse is not responsible for deciding whether or not abuse has occurred. That is a task for the professional child protection agencies following a referral to them of concern about a child.

Model 4 – Checklist for reporting suspected abuse

This form is to help you to describe the information you have, you are not required to seek further information from any parties. This is the responsibility of Social Services should an investigation arise.

Name of child:

Age:

Home address and home number (if known):

Are you reporting your own concerns or passing on those of somebody else? Give details.

Brief description of what has prompted the concerns: include dates, times etc of any specific incidents.

Any physical signs? Behavioural signs? Indirect signs?

Have you spoken to the child? If so, what was said?

(If the child has not spoken to you of their own volition, do not seek to investigate the issue with the child yourself)

Has anybody been alleged to be the abuser? If so, give details.

Have you consulted anybody else? Give details.

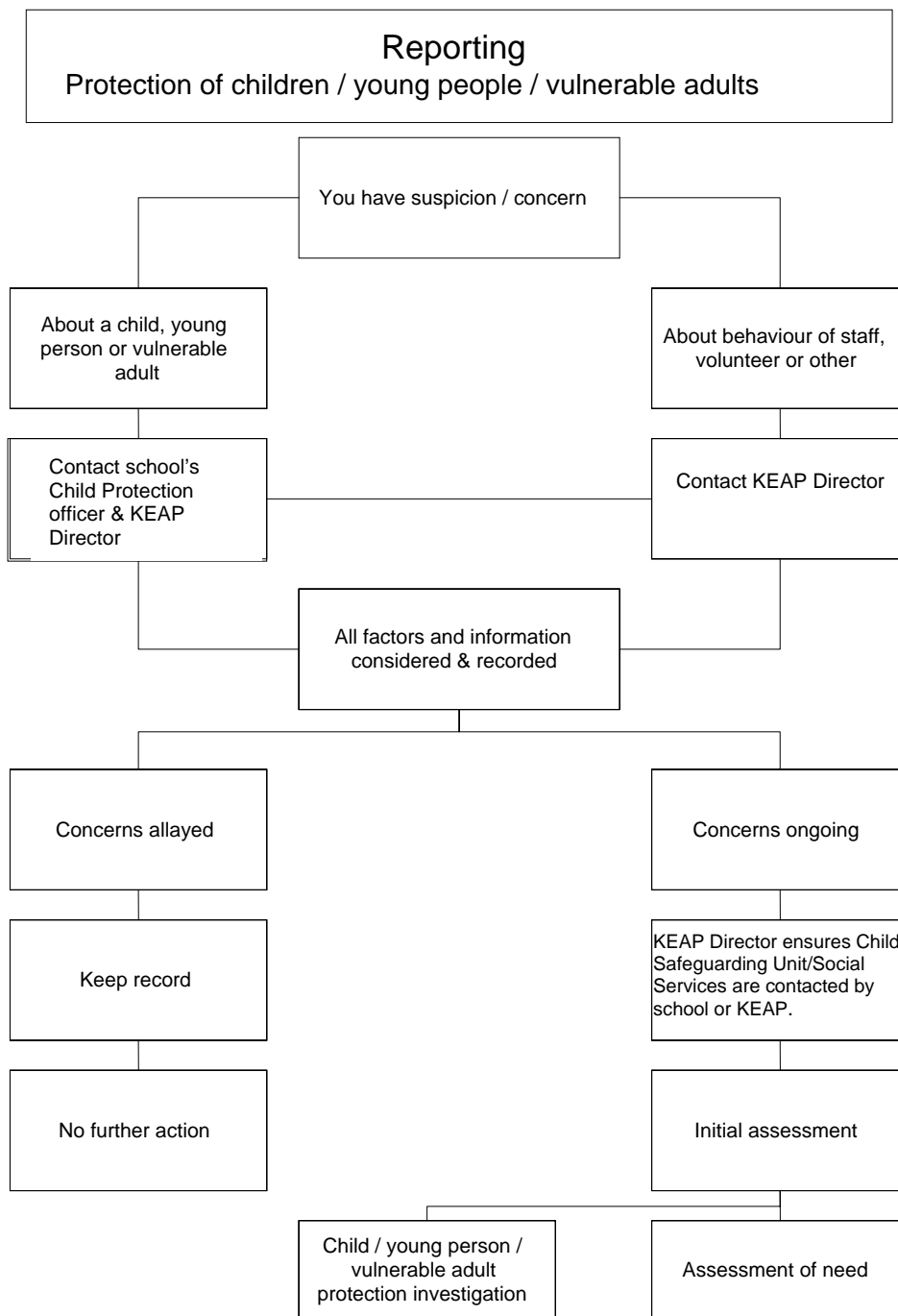
Your name and role

To whom reported and date of reporting

Your signature Today's date

If you are a freelance artist or practitioner working on behalf of KEAP or a member of KEAP's staff, you should refer this to the school's designated child protection officer and the KEAP Director. You should take no action yourself.

Model 5 – Flowchart : Reporting child protection concerns



Template Contract

This contract sets out the terms of agreement between

<i>Artist</i>

<i>Organisation</i>

and

<i>School</i>

and

1. Project Description

This may be attached separately

2. Funding

This project is funded by the following bodies:

--

The project is co-ordinated by:

--

3. Duration

The artists work will commence on:

--

and end on:

--

4. Project details

Any other agreements between contracting party and artist e.g. details of events, activities, classroom assistance provided by school etc.

--

5. Fees

The agreed fees and payment terms are as follows:

--

6. Expenses

The agreed extra project related expenses are as follows:

7. Facilities, equipment and materials

Work will take place in the specified setting.

The following facilities, equipment and materials will be supplied by the contracting school/organisation:

The following facilities, materials and equipment will be supplied by the artist:

8. Evaluation

State how the evaluation is to be carried out, and whose responsibility it is.

9. Insurance details

Artists should have their own public liability insurance. School insurance only covers staff on payroll and students. Schools should undertake risk assessments for activities.

10. Copyright

The artist owns the copyright of any work created by the artist during the project. Any work jointly created by the artist, teachers and pupils will be the joint copyright of all contributors.

The artist agrees to allow the school to reproduce any of his work created during the project for purposes directly related to the project e.g. publicity.

11. Unforeseen circumstances

If an aspect of the project is delayed due to unforeseen circumstances (such as accident, illness or bereavement), the parties agree to discuss the matter with a view to rescheduling.

Signed _____
(Artist)

Date:

Signed _____
(Org)

Date:

Signed _____
(School)

Date: